

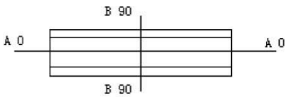
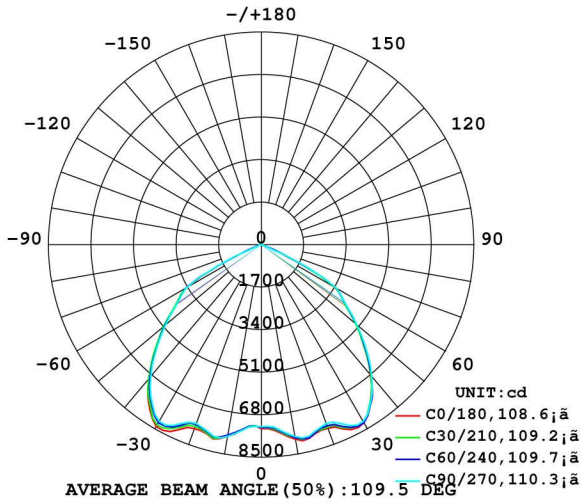
LUMINAIRE PHOTOMETRIC TEST REPORT

Test:U:229.6V I:0.8781A P:196.0W PF:0.9720 Lamp Flux:21527.9x1 lm

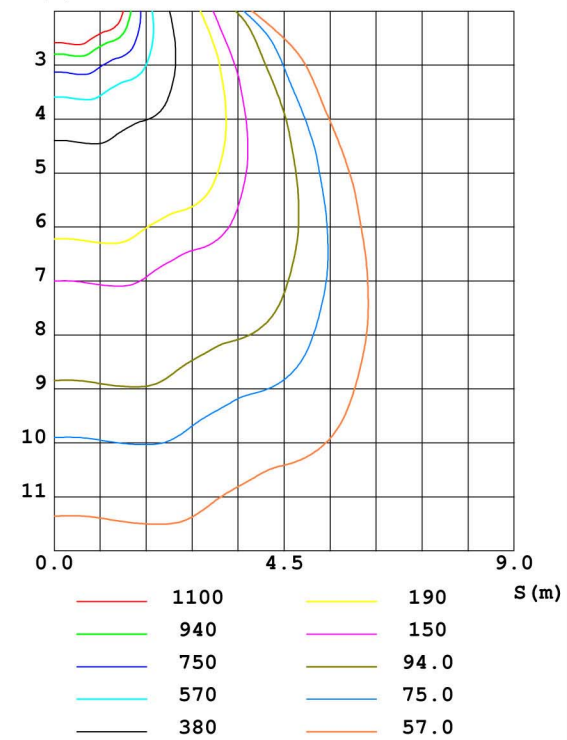
NAME:	TYPE:	WEIGHT:
DIM.:	SPEC.:	SERIAL No.:
MFR.:	SUR.:	PROTECTION ANGLE:

DATA OF LAMP		PHOTOMETRIC DATA			Eff: 109.86 lm/W
MODEL	HIGHBAY 200W - ULTRA	I _{max} (cd)	8402	S/MH (C0/180)	1.49
NOMINAL POWER (W)	198	LOR (%)	100.0	S/MH (C90/270)	1.50
RATED VOLTAGE (V)	230	TOTAL FLUX (lm)	21528	η UP, DN (C0-180)	0.5, 49.4
NOMINAL FLUX (lm)	21527.9	CIE CLASS	DIRECT	η UP, DN (C180-360)	0.5, 49.6
LAMPS INSIDE	1	η up (%)	1.0	CIBSE SHR NOM	1.25
TEST VOLTAGE (V)	229.5	η down (%)	99.0	CIBSE SHR MAX	1.35

LUMINOUS INTENSITY DISTRIBUTION DIAGRAM



C0 PLANE ISOLUX DIAGRAM (UNIT:lx)



C Range: 0 - 360DEG
 C Interval: 30.0DEG
 Test Speed: HIGH
 Temperature: 25.00DEG

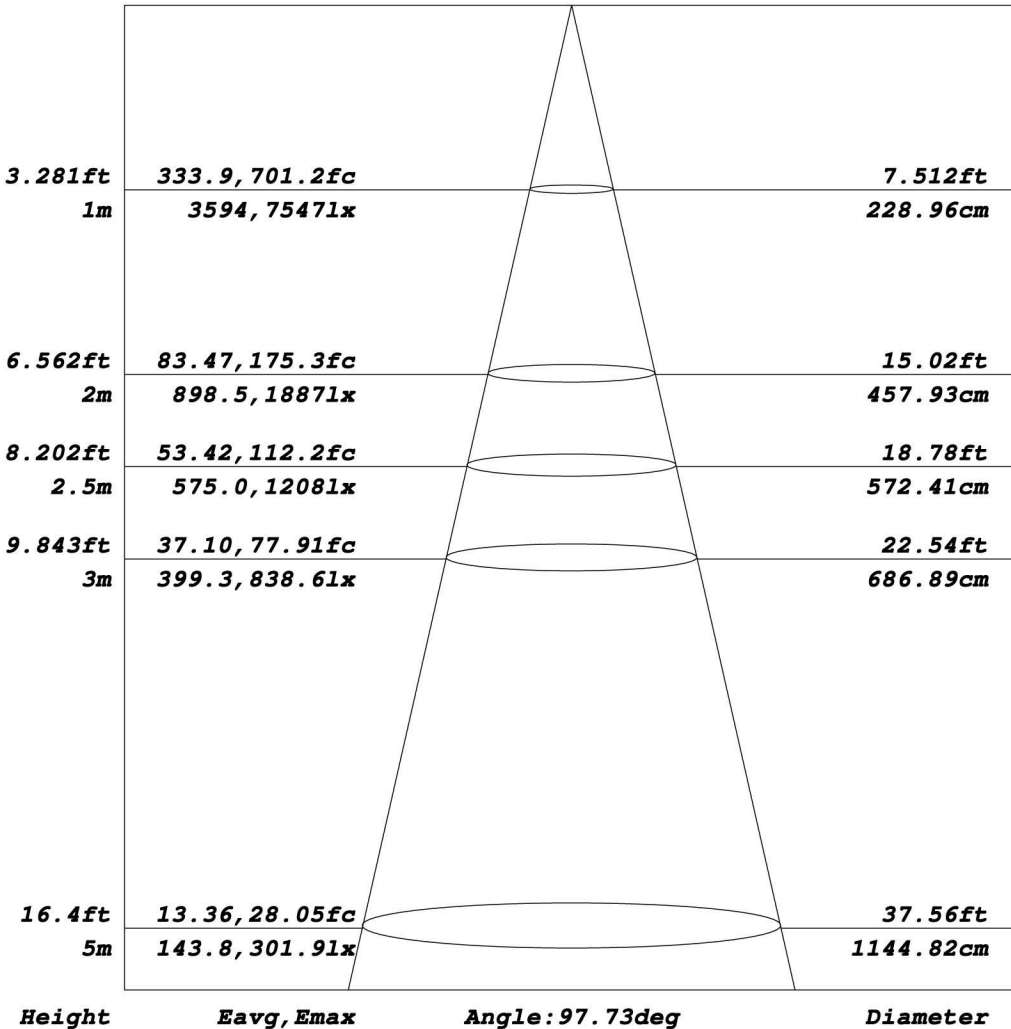
γ Range: 0 - 180DEG
 γ Interval: 2.0DEG
 Test System: EVERFINE GO-2000H_V1 SYSTEM V2.0.265
 Humidity: 55%
 Test Distance: 13.435m [K=1.0000]
 Remarks: %THDv = 0.56 %THDi = 9.46

AAI Figure

Test:U:229.6V I:0.8781A P:196.0W PF:0.9720 Lamp Flux:21527.9x1 lm

NAME:	TYPE:	WEIGHT:
DIM.:	SPEC.:	SERIAL No.:
MFR.:	SUR.:	PROTECTION ANGLE:

Flux out:16036 lm



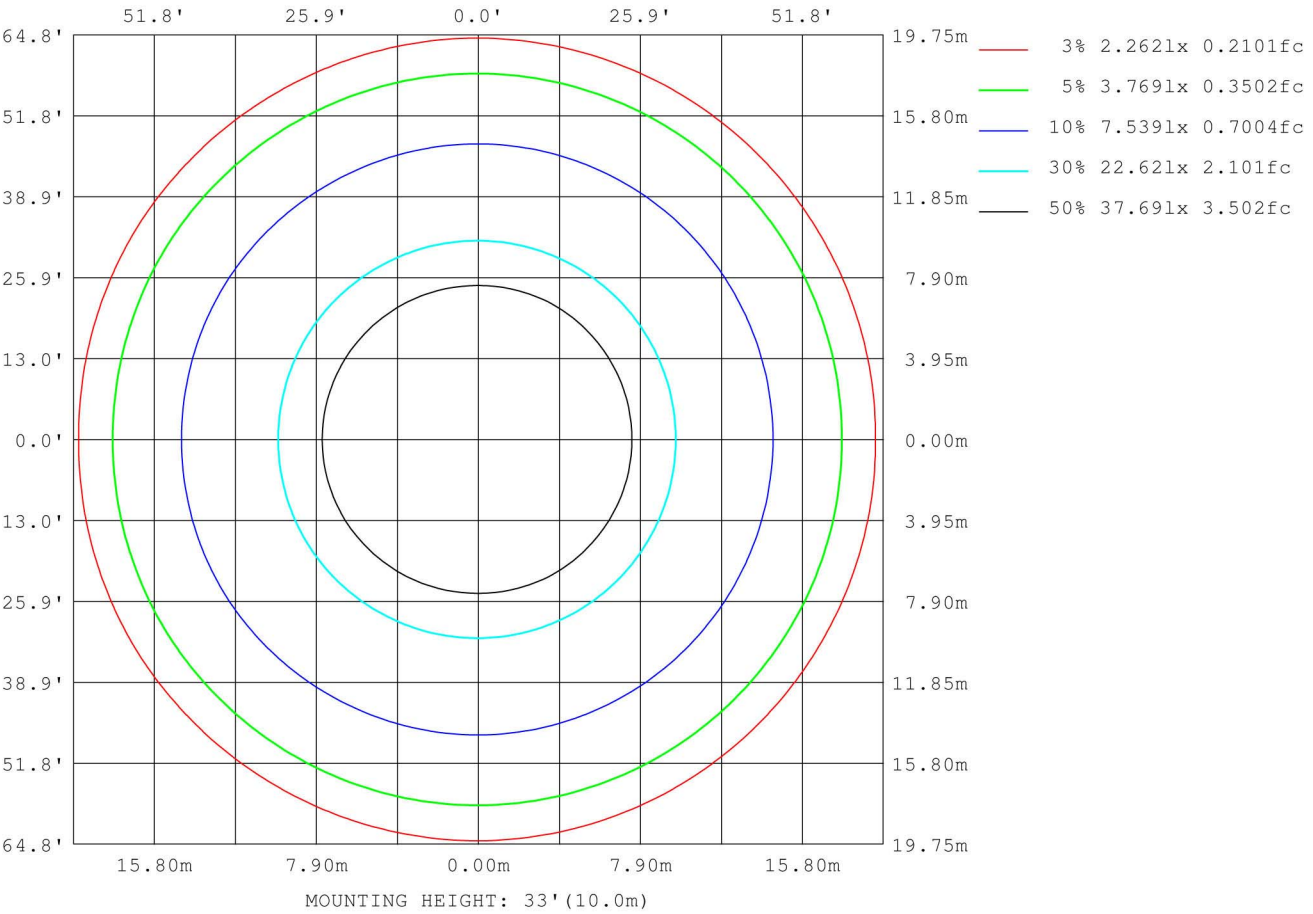
Note: The Curves indicate the illuminated area and the average illumination when the luminaire is at different distance.

C Range: 0 - 360DEG
 C Interval: 30.0DEG
 Test Speed: HIGH
 Temperature: 25.00DEG

γ Range: 0 - 180DEG
 γ Interval: 2.0DEG
 Test System: EVERFINE GO-2000H_V1 SYSTEM V2.0.265
 Humidity: 55%
 Test Distance: 13.435m [K=1.0000]
 Remarks: %THDv = 0.56 %THDi = 9.46

ISOLUX DIAGRAM

Test:U:229.6V I:0.8781A P:196.0W PF:0.9720 Lamp Flux:21527.9x1 lm		
NAME:	TYPE:	WEIGHT:
DIM.:	SPEC.:	SERIAL No.:
MFR.:	SUR.:	PROTECTION ANGLE:



C Range: 0 - 360DEG
 C Interval: 30.0DEG
 Test Speed: HIGH
 Temperature: 25.00DEG

γ Range: 0 - 180DEG
 γ Interval: 2.0DEG
 Test System: EVERFINE GO-2000H_V1 SYSTEM V2.0.265
 Humidity: 55%
 Test Distance: 13.435m [K=1.0000]
 Remarks: %THDv = 0.56 %THDi = 9.46